

UIC Rail relays

Part of our range of relays has been approved for use by our rail sector customers.



UIC approved relays

Voltage range

- EP371-UIC**

5 instant 7 A reversing switches



30 - 45 - 90 - 137 - 275 VDC

- EP571-UIC**

5 instant 5 A reversing switches



30 - 45 - 90 - 137 VDC

- BA-UIC**

3 instant 10 A reversing switches



30 - 45 - 90 VDC

- CAA72- Y23AA**

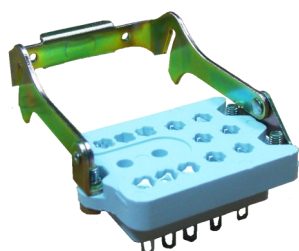
4 instant 8 A reversing switches



30 - 45 - 90 VDC

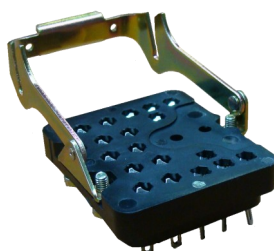
Bases and accessories

EP3 Series



- Front connection screw base EVP3A
- Rear connection clip base EX3A

EP5 Series



- Front connection screw base EVP5A
- Rear connection clip base

BA Series



- Front connection screw base EVD
- Rear connection clip base ER

CA Series



- Front connection screw base EVB1/CA
- Rear connection clip base ERC1/CA

For further information please contact us.